



Installation and Configuration Manual — IES Keywatt 24 kW Charging Station

Version:2023.3.1

Table of Contents

1. Introduction	2
1.1. Legal provisions	2
1.2. Qualification of the installing electrician.	2
1.3. Symbols used	2
1.4. Symbol conventions	2
2. Product description	3
2.1. Scope of delivery	3
2.2. Prerequisites	3
3. Commissioning	4
3.1. Ethernet connection	4
4. Contact	6
5. Directories	7
5.1. List of illustrations	7

1. Introduction

1. Introduction

1.1. Legal provisions

The information contained in these documents is the property of FENECON GmbH. Publication, in whole or in part, requires the written consent of FENECON GmbH.

Subject to changes and printing errors!

1.2. Qualification of the installing electrician

A qualified electrician is a person who has the necessary experience and training:

- Setting up, switching on, switching off, disconnecting, short-circuiting and repairing circuits and devices
- Standard maintenance and use of protective devices in accordance with current safety standards
- First aid/emergency care
- Current knowledge of local regulations, standards and guidelines

1.3. Symbols used

Before reading the manual, you should familiarize yourself with the different types of safety warnings. You should also familiarize yourself with the importance of the safety warnings.

1.4. Symbol conventions





	This symbol indicates an imminent danger. If this danger is not avoided, it can lead to death or serious injury.
	This symbol indicates a potentially dangerous situation. If this dangerous situation is not avoided, it may result in minor or moderate injury.
	This symbol indicates a warning. Failure to observe this warning may result in damage and/or destruction of the system.
	This symbol indicates a note. It is recommended that the note be observed.

Table 1. Symbol conventions

2. Product description

2.1. Scope of delivery

After you have received the delivery, check that all components have been included. Check the scope of delivery for damage. If anything is missing or damaged, please contact the supplier immediately. The following components are included in the delivery:

- IES Keywatt charging station
- Installation manual — IES Keywatt charging station (manufacturer)
- Installation instructions — IES Keywatt charging station

2.2. Prerequisites

The following is required to use the charging station:

- FEMS App IES Keywatt 24 kW Charging Station



The "FEMS App IES Keywatt 24 kW Charging Station" is not included in the scope of delivery. This must be purchased separately if not already available.

3. Commissioning

3. Commissioning



Please follow the instructions in the installation manual supplied to install the IES Keywatt charging station.



This quick guide refers to the original user manual.
It serves as an installation aid for qualified electricians in the area of communication interfaces, but is not a substitute for studying the user manuals.

3.1. Ethernet connection

The Ethernet cable is plugged into the left Ethernet port and laid along the cable duct. The cable is then integrated into the customer network via a switch or directly at the router.

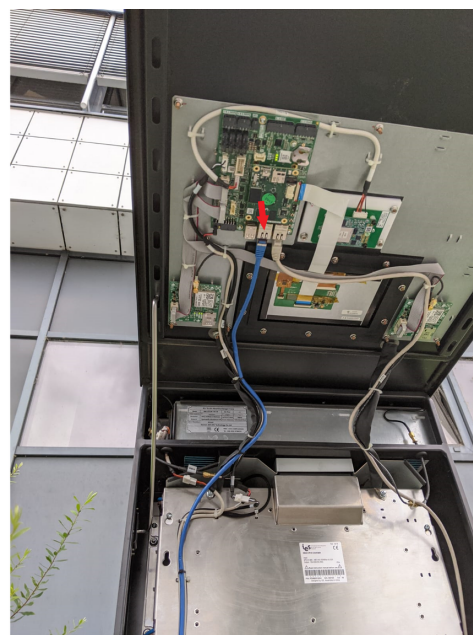
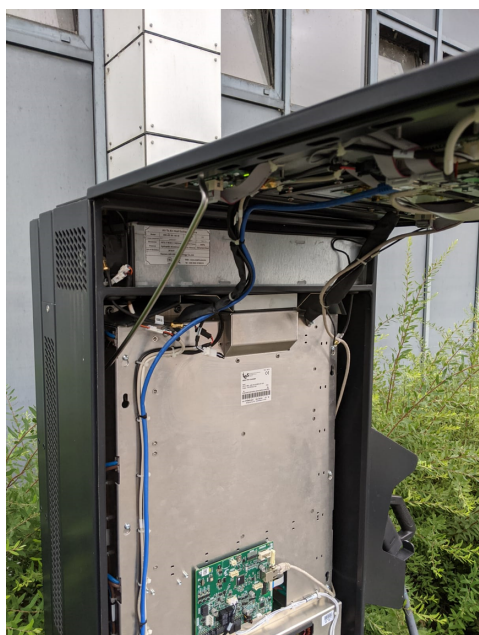


Figure 1. Diagram for the network connection

Then try to access the configuration page of the charging station. To do this, enter the IP address of the charging station and the port **8088** into a browser, separated by a colon. You can find the IP address in your router under the connected devices.

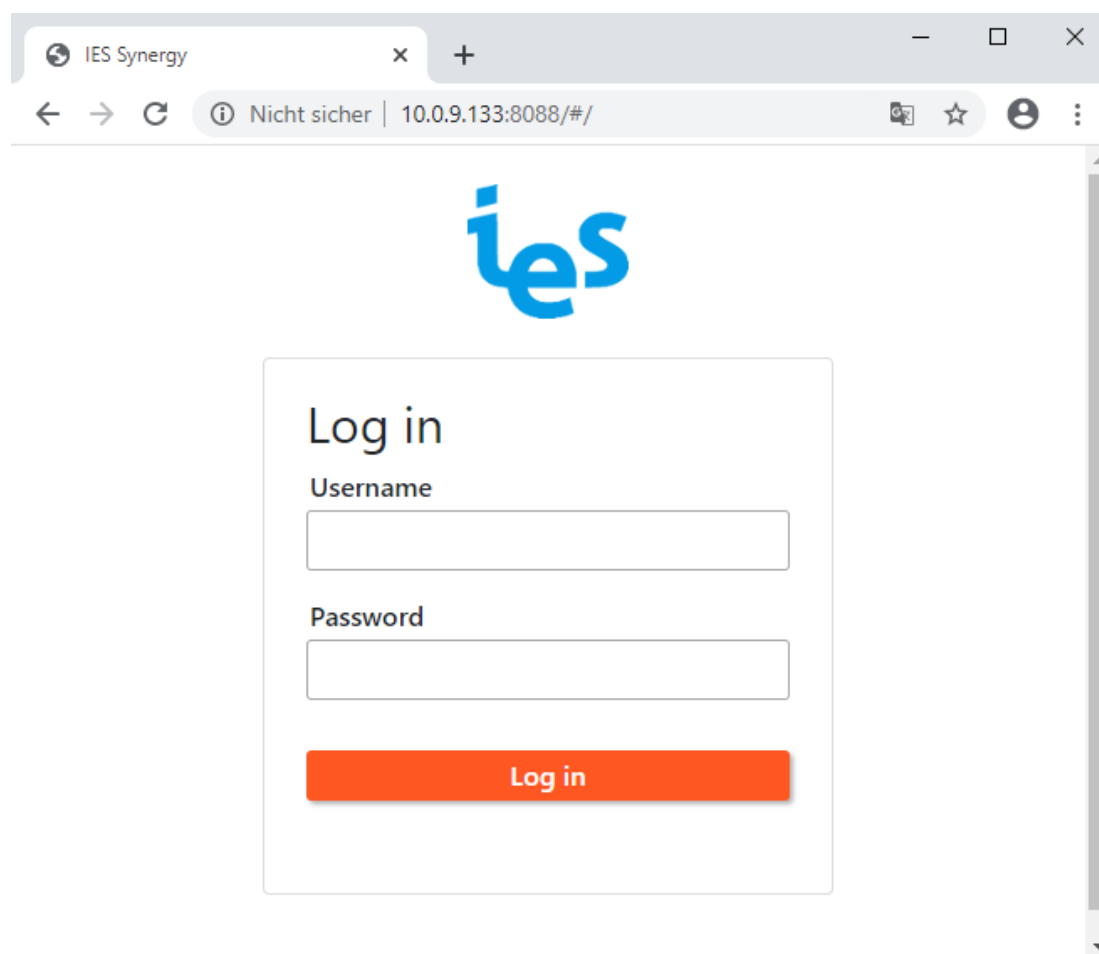


Figure 2. Charging station registration page

The configuration is now complete.

4. Contact

4. Contact

For support, please contact:

FENECON GmbH
Gewerbepark 6
94547 Iggenbach

Phone — Service: +49 (0) 9903 6280 0
E-Mail — Service: service@fenecon.de

5. Directories

5.1. List of illustrations

Figure 1. Diagram for the network connection

Figure 2. Charging station registration page